

# E-LITE PVC SHUTTER



**SEND BACK  
BY MAIL OR FAX**



**BOYRIVEN (Commercial Vehicle Components) LTD**  
 Wainman Road - Woodston Peterborough Cambridgeshire PE2 7 BU - UK  
 Tel : +44(0) 1733 361 377 Fax : +44(0) 1733 361 334  
 http://www.boyriven.com e-mail:sales@boyriven-uk.com  
 Registered in England NO. 936102 VAT NO 764 1634 26

Order N° : .....

**QUANTITY :** \_\_\_\_\_

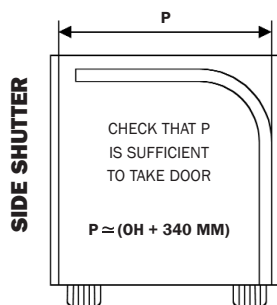
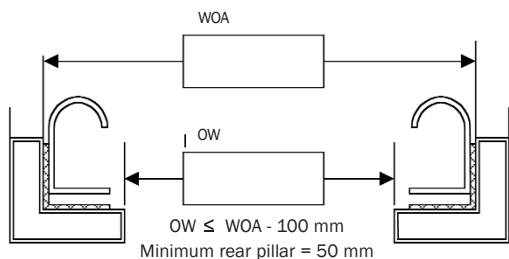
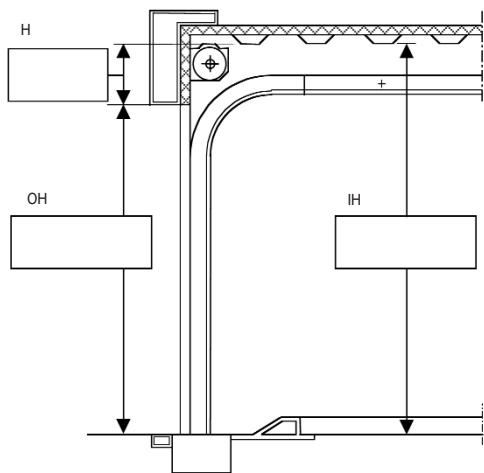
**DELIVERY Required :** \_\_\_\_\_

**UNIT PRICE £ :** \_\_\_\_\_

## DIMENSIONS

**TYPE OF SHUTTER**

- REAR  
 SIDE



## PAINT FINISH OPTIONS

- PAINTED FINISH (STANDARD DELIV.+6DAYS)**
- HIGH GLOSS PAINTED FINISH TO RAL CODE**
- RAL**

## LOCK OPTIONS ( SEE PAGE 38)

- STANDARD FIT LOCK**
- STANDARD LOCK INCLUDING KEY LOCK**
- SECURITY LOCK INCLUDING KEY LOCK**
- SLAM LOCK (SL)**
- SLAM LOCK (SL) INCLUDING KEY LOCK**
- SLAM LOCK (SL) INTERIOR OPENING**

## OTHER EQUIPEMENT

- HORIZONTAL BRAKE**
- IDENTICAL KEYS**
- ADDITIONAL GRAB HANDLE**
- HEAVY DUTY ROLLERS**
- LONG PULL STRAP**

## SPECIAL REQUIREMENTS

## CUSTOMER CONTACT

**NAME :** \_\_\_\_\_  
**TEL :** \_\_\_\_\_  
**FAX :** \_\_\_\_\_  
**SIGNED** \_\_\_\_\_  
**DATE** \_\_\_\_\_

## DELIVERY ADDRESS

\_\_\_\_\_

\_\_\_\_\_

\_\_\_\_\_

\_\_\_\_\_

\_\_\_\_\_